

FOR SALE

RARE CENTRALLY LOCATED INDUSTRIAL
BUILDING WITH YARD SPACE

74

GLACIER STREET Coquitlam, BC



11,852 SF on 0.988 Acres – Vacant Possession September 1, 2025

Marketed by



CUSHMAN &
WAKEFIELD

Property Managed by

Beedie

FOR SALE

74

GLACIER STREET
Coquitlam, BC



BUILDING FEATURES

- Mix of brick & concrete tilt-up construction (1980)
- Approx. 21' clear ceiling height in shop
- One (1) 12' x 12' grade loading door
- Five (5) ton & two (2) ton overhead travelling cranes (tenant property)
- Craneways extending to the rear yard area (approx. 20' x 20' opening)
- 600V, 600 amp 3-phase electrical service
- T8 energy-efficient fluorescent lighting
- Infrared warehouse heating
- Air-conditioned office area
- Three (3) washrooms
- Shower & locker room
- Twenty-one (21) parking stalls
- Fully paved & fenced yard area

THE LOCATION

Situated in the heart of Mayfair Industrial Park in Coquitlam, the Subject Property offers one of the most central and desirable locations in the Lower Mainland, with easy access to Downtown Vancouver, Mary Hill ByPass, Highway 1 and the US Border. The west side of the Property offers direct exposure to the busy United Boulevard.

SALIENT DETAILS

ZONING M-1 General Industrial, allowing a wide range of uses including warehousing, manufacturing, industrial equipment sales/service, autobody, recycling and mini-storage.

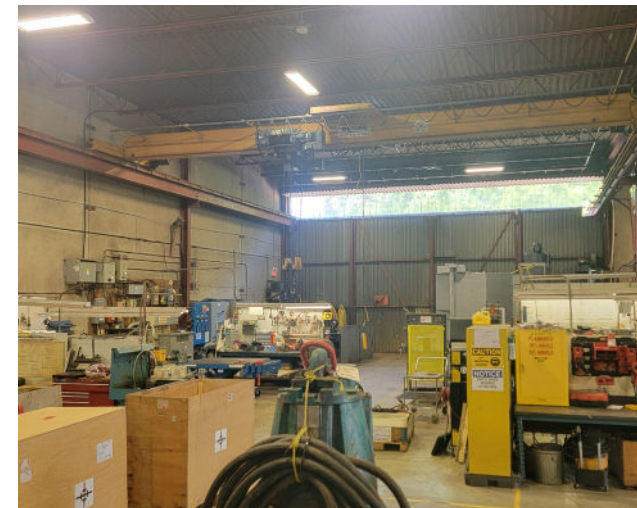
SITE AREA 0.988 acres

BUILDING AREA	Main Floor Office	1,800 SF
	Shop/Warehouse	10,052 SF
	Total Area	11,852 SF

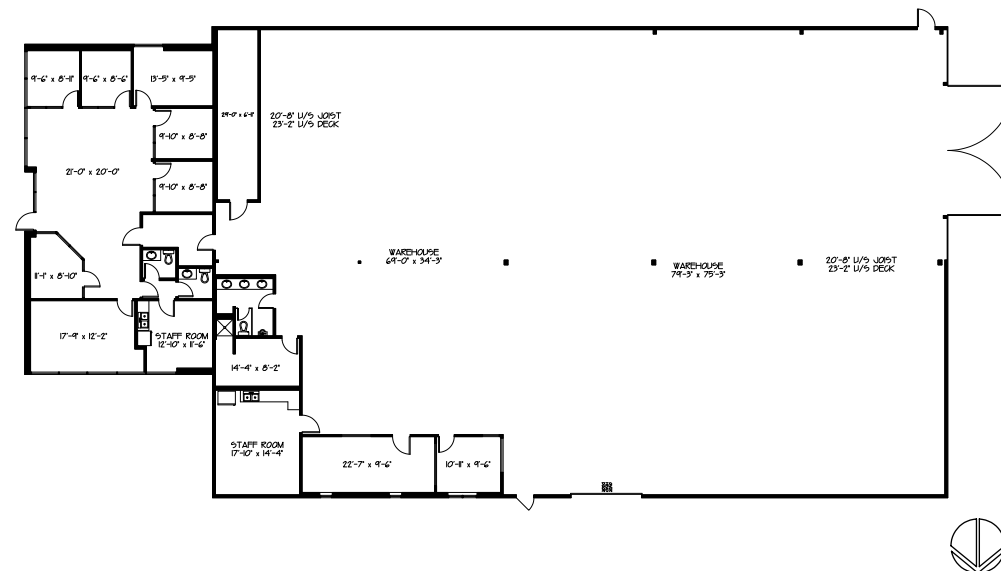
PROPERTY TAXES \$88,412.73 (2024)

TENANCY The Property is occupied until September 1, 2025 with no rights of renewal.

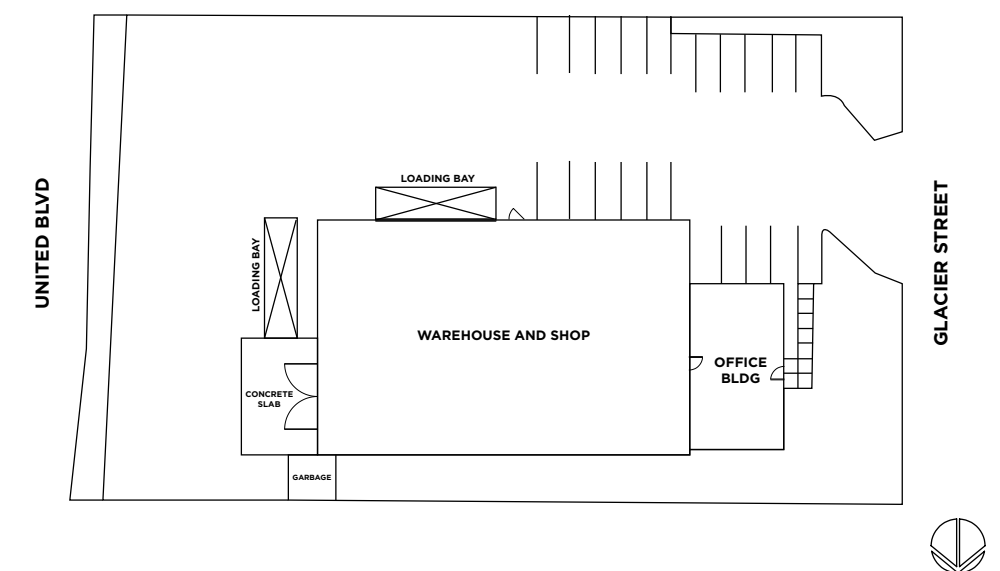
SALE PRICE Please contact listing agents



FLOOR PLAN

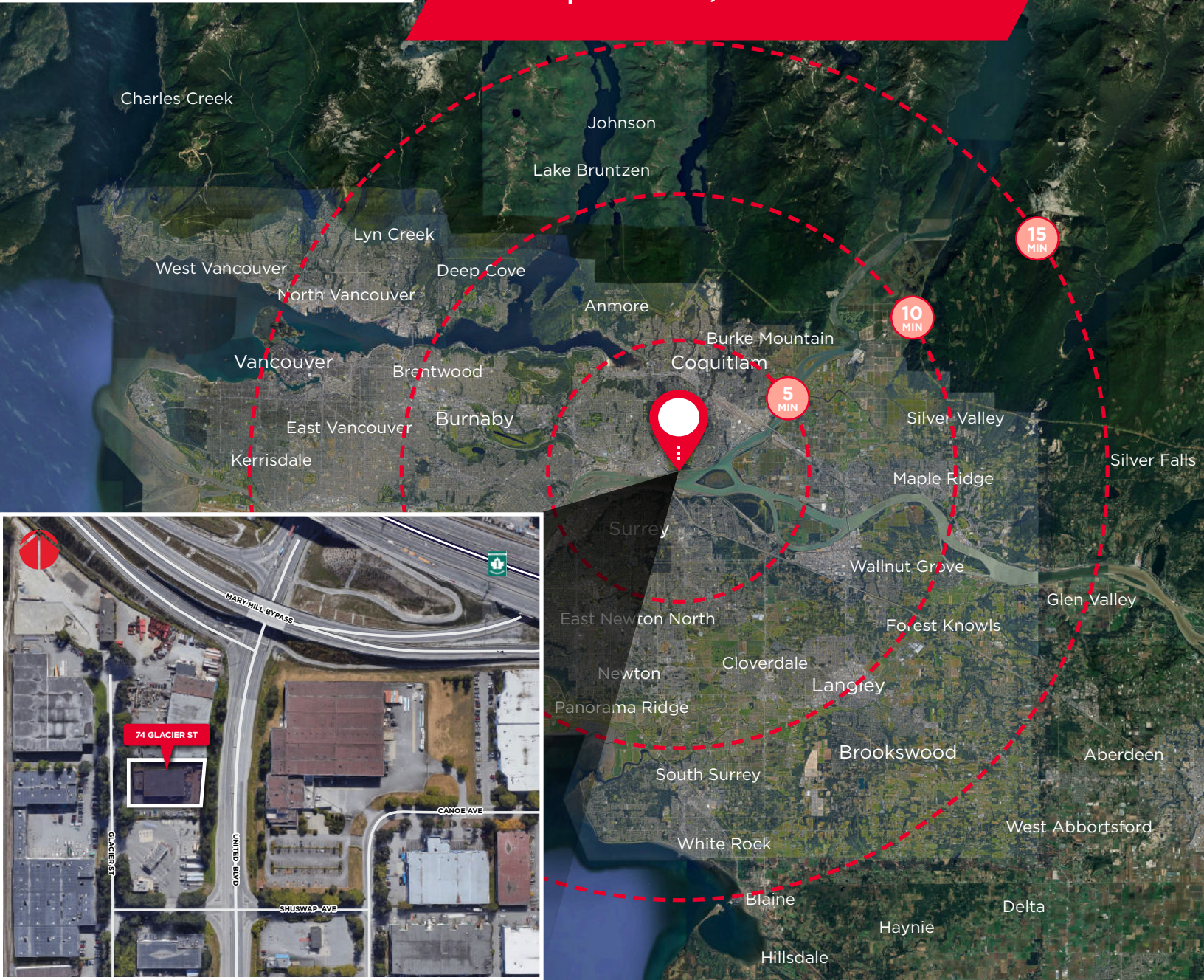


SITE PLAN



74

GLACIER STREET Coquitlam, BC



Rick Eastman

Personal Real Estate Corporation
Executive Vice President, Industrial
+1 604 640 5863
rick.eastman@ca.cushwake.com

Eric Rice

Personal Real Estate Corporation
Vice President, Industrial
+1 604 640 5877
eric.rice@ca.cushwake.com



Suite 1200 - 700 West Georgia Street | PO Box 10023, Pacific Centre | Vancouver, BC V7Y 1A1 | +1 604 683 3111 | cushmanwakefield.ca

©2024 Cushman & Wakefield ULC. All rights reserved. The information contained in this communication is strictly confidential. This information has been obtained from sources believed to be reliable but has not been verified. NO WARRANTY OR REPRESENTATION, EXPRESS OR IMPLIED, IS MADE AS TO THE CONDITION OF THE PROPERTY (OR PROPERTIES) REFERENCED HEREIN OR AS TO THE ACCURACY OR COMPLETENESS OF THE INFORMATION CONTAINED HEREIN, AND SAME IS SUBMITTED SUBJECT TO ERRORS, OMISSIONS, CHANGE OF PRICE, RENTAL OR OTHER CONDITIONS, WITHDRAWAL WITHOUT NOTICE, AND TO ANY SPECIAL LISTING CONDITIONS IMPOSED BY THE PROPERTY OWNER(S). ANY PROJECTIONS, OPINIONS OR ESTIMATES ARE SUBJECT TO UNCERTAINTY AND DO NOT SIGNIFY CURRENT OR FUTURE PROPERTY PERFORMANCE.